

# Raise Your Game with HDS®



## HDS® 3.0 Software Update Spring 2010

Priceless Performance Expansions.  
One Free Download from Lowrance.

### Broadband Radar® Advances

The free Lowrance HDS 3.0 update improves on the newest, safest innovation in radar since radar, expanding easy-to-use navigational viewing and safety features. Lowrance BR24 Broadband Radar boaters will enjoy the added features of:

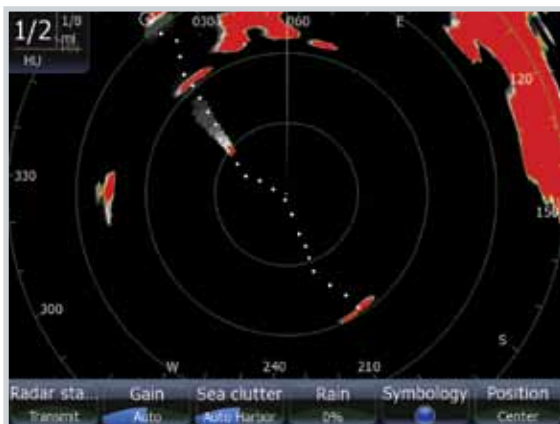


**Higher-speed radar sweeps** – A selectable 36 rpm rotation rate, at 2 nm range and under, gives a 50% faster radar sweep to view and track close-in, rapidly moving targets for enhanced navigation safety.

**MARPA** – Target acquisition and tracking display of up to ten targets within a 1/4 nm range for an added measure of collision-avoidance safety (requires HDS networked Broadband Radar and heading sensor).

**Guard zones** – Single and dual guard zones with alarms are easy to set, and they alert you to targets entering, or leaving, the zone(s) you've set – including vessels, land masses and buoys.

**Enhanced range discrimination** – Enjoy 30% better high-resolution separation of closed-space targets, plus improved noise rejection from even the most powerful, nearby 25 kW pulse radars.



With MARPA, Vessel #1 is tracked at screen top, with another vessel trail approaching quickly at 1/8 nm.



Dangerous vessel incoming at 20.1 mph with 35 seconds to Time to Closest Point of Approach (TCPA).

# More HDS 3.0 Software Features Spring 2010 Update

## Keep A Digital Eye on Your Boat

A new level of advanced technology to easily monitor boat systems is coming soon, and Lowrance HDS is fully ready to integrate with the 3.0 update.

For boats equipped with HDS and DSS omni-BUS™ systems, a new level of on-the-water safety and peace of mind is at your fingertips – with automatic monitoring, plus visual and audible alerts when viewing fishfinder or chartplotter screens. Easily monitor systems voltage, livewell and baitwell status, aerator with many more key systems to keep you in-touch and on-top of boat functions.

For inland as well as inshore, coastal and offshore fishing and cruising, systems monitoring with HDS and omni-BUS™ is the wave of the future that's already here with Lowrance.



## Mercury® Engines Finally Reveal All

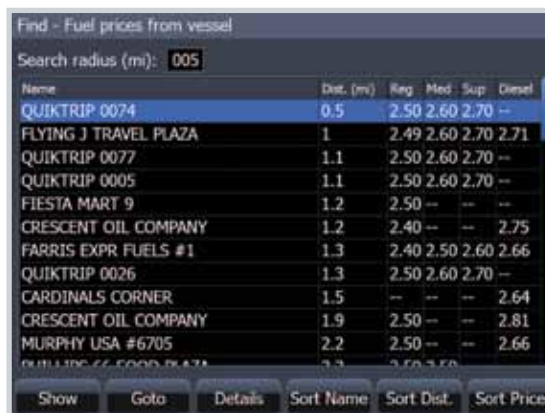
If you have a Mercury®-powered boat, you can now see what you've been wanting and missing: complete engine data via NMEA 2000®, with the exclusive and versatile NMEA 2000® data viewing interface of HDS.

For boats equipped with compatible late model Mercury® outboard or stern-drive engines, just connect the new SmartCraft™ MercMonitor with your engine, and then to HDS via the NMEA 2000® network, and welcome to a whole new world of vital and valuable engine data to allow full management -- like RPM, voltage, pressures, temperatures, fuel flow and much more.



## More Gas Choices to Go On

Add up-to-date fuel pricing to your HDS with the LWX-1 satellite antenna and your SIRIUS® marine weather subscription at no extra cost. A great convenience to trailer boater subscribers, SIRIUS® Roadside Retail Fuel Prices feature gives you a heads up on fuel prices wherever you tow your boat.



**HDS® 3.0 Software Update**  
Coming to [www.lowrance.com](http://www.lowrance.com) for free download  
April 2010